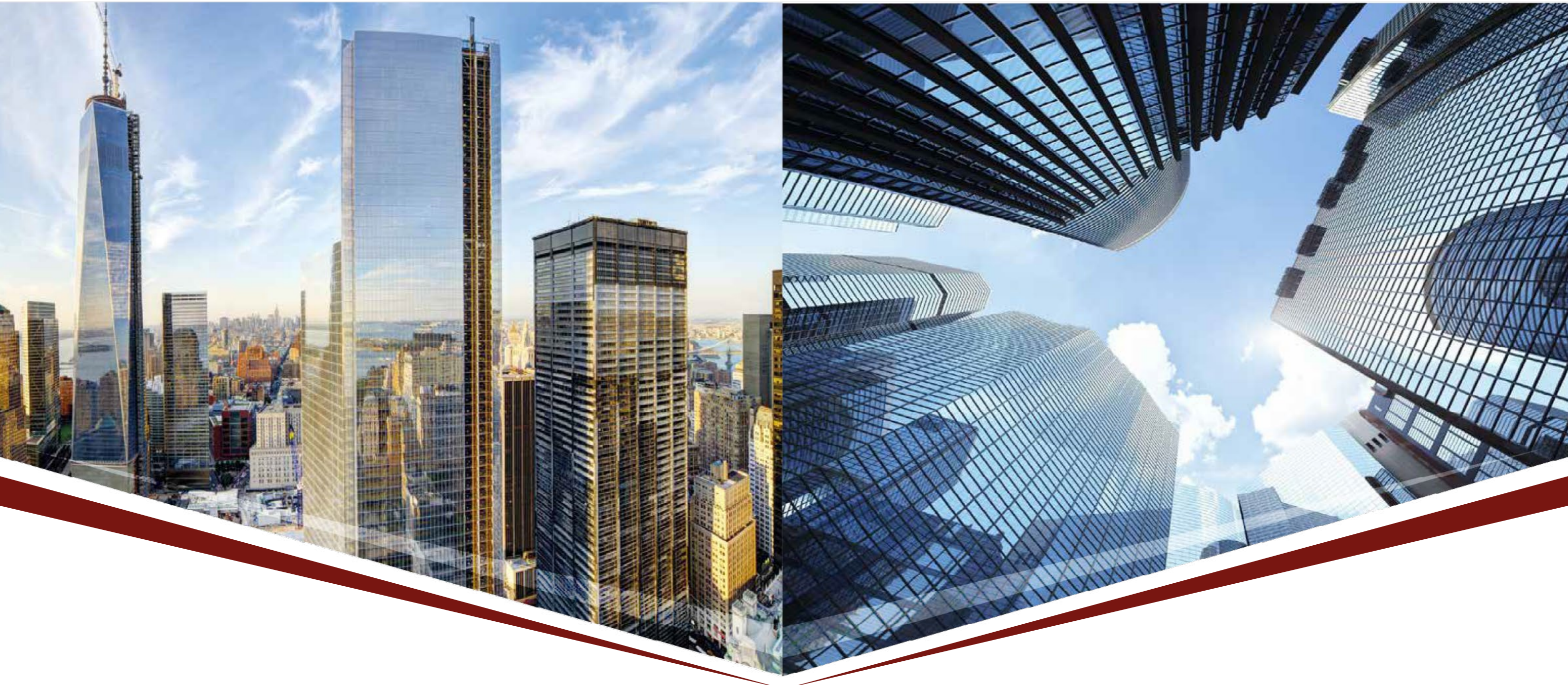


NEXGEN

Construction

Façade Access | External Cladding Systems | Fall Protection

Building Maintenance Units AST35



Nexgen Construction

Unit 1 - Shepcote Office Village

Shepcote Lane | Sheffield | S9 1TG | UK

www.nexgenconstruction.co.uk

info@nexgenconstruction.co.uk

 /Nexgenconstruction

www.nexgenconstruction.co.uk

NEXGEN

Construction

Façade Access | External Cladding Systems | Fall Protection



NEXGEN
Construction



Nexgen are the UK exclusive agents for
Ademsan Machinery

Production Areas

- Building Maintenance Units
- Façade Cleaning Machines
- Electrical Suspended Scaffolding
- Special Design/ Custom-Made
- Rebar Cutting Machines
- Rebar Bending Machines
- Resistance Bending Machines

Our company, Ademsan Machinery, is one of the leading suppliers of Building Maintenance Units (BMU), light construction machinery and equipment. Our production and support services departments are based in Istanbul, Turkey.

Together with 20 distributors in Turkey and 15 overseas (Europe, Asia & MENA regions), we manufacture our products primarily for the construction industry.

Our carefully selected workforce has decades of combined experience to bring project design, manufacturing, installation, maintenance, and technical support services for Building Maintenance Units, Special Design Platforms and Rebar Cutting and Rebar Bending Machines.

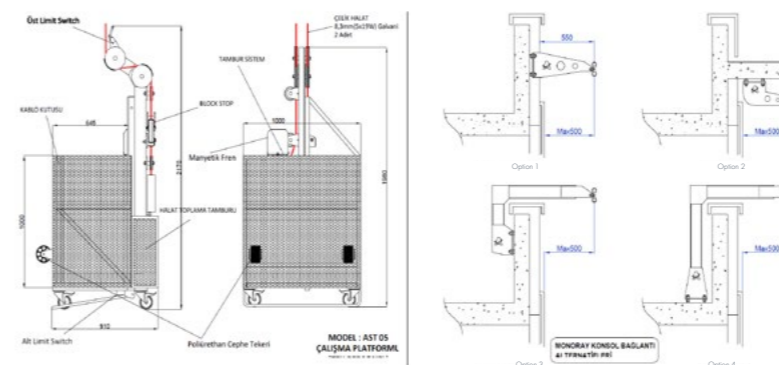
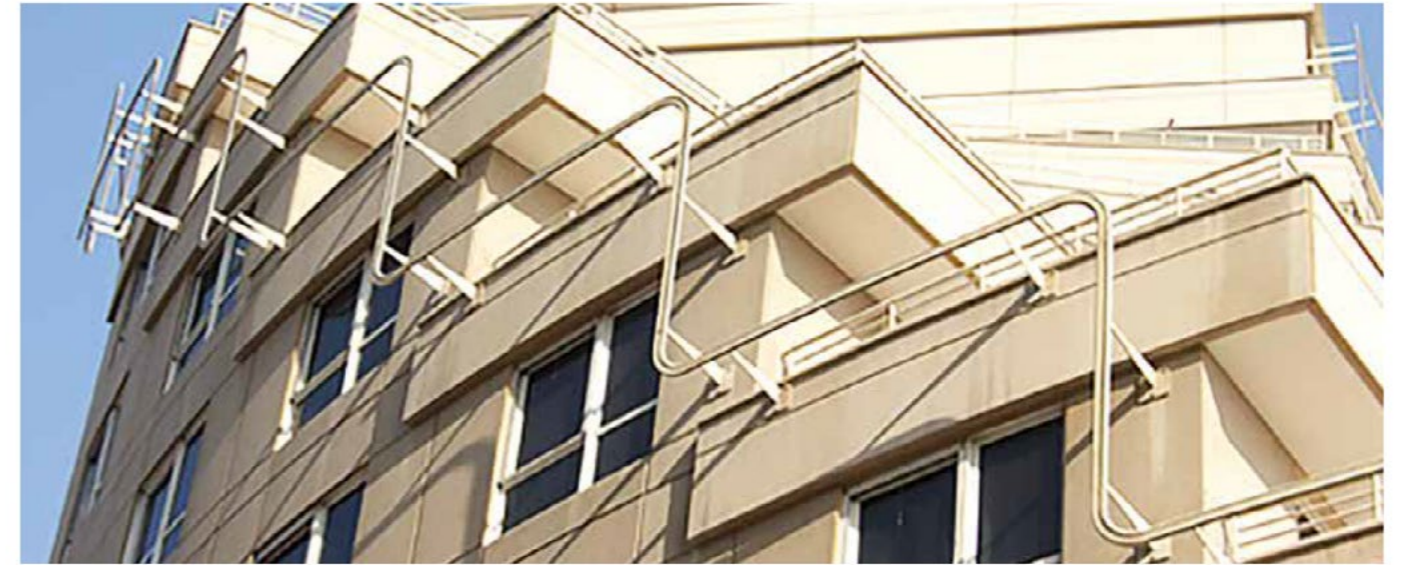
Both standard and custom-designed platforms are manufactured.

Our products undergo rigorous quality checks at all stages of production.

AST-35

Series Climbing Monorail Façade Cleaning Systems

- This system is a façade cleaning system that moves horizontally and vertically over aluminium rail (monorail) connected to the façade using special brackets.
- According to the customer's requirements and building design, either a one-person or two-person platform can be used.
- Platform movement can be achieved either by means of manual or automatic special made movement hoists.
- Aluminium monorail is manufactured and mounted in accordance with the buildings' façade shape and height.
- Monorail carrying arms (brackets) can be mounted on the façade's front side, the parapet, the inner side of the parapet, away from the parapet on the concrete floor, or under the eaves.
- Rails can be painted either with natural aluminium colour or upon request.
- All movements can be controlled via the control panel inside the working platform.
- Vertical movement is performed via the climbing hoists' mechanism located on the working platform.
- Damage on the façade glass is prevented by means of two polyurethane wheels / bumpers found on the platforms' front side.
- Measures such as double security wire ropes, safety lock system and wire rope tension provide a safe working environment.
- Overload sensor, lower collision bar, upper and lower limit switches prevent operator errors.
- Manufacturing and assembly is in accordance within EN 1808 standards and norms.



FEATURES	
Used with	AST-05 / AST-10 / AST-10-01
Power	3,2 kW
Wire rope	4 Pieces 8 Mm 6x19
Voltaç	380 V
Control	Cable
Vertical Movement	7 m/min 2 unit 1,1 kW
Horizontal Movement	4 m/min 2 unit 0,25 kW
Platform Weight	400 Kg
Rail	Aluminium 6060 T6 Serial (7 m/kg)
Working Capacity	120 Kg / 240 Kg